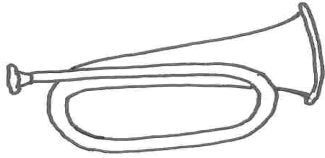


January 2011

# Helgorn Taf Bugle



**Next edition will be published at the end of June 2011. Last date for submission for inclusion is**

This edition of the Helgorn Taf has been generously sponsored by "Bert". Son in law of Rosie and Tom at Cwmpedol back in the 1980's, he has a long association with the community.



*The newsletter for the communities of Llanfallteg, Henllan Amgoed, Cwmfelin Boeth, Hiraeth, Llangan and Rhydywrach.*  
Web site <http://www.llanfallteg.org/> Produced by Henllanfallteg Community Association.

**POST OFFICE CHANGES**—The Post Office in Llanfallteg is now only open on a Tuesday and you can no longer go on a Thursday. However the Tuesday opening hours have been extended and are from 9am to 2pm. Please support your local post office - we're very lucky to still have it.

**PARKING ON THE RAILWAY BRIDGE**—The Community Council has at last persuaded the important people at Network Rail Swindon that parking on our railway bridge is a serious danger. Notices are going up telling all railway maintenance staff and contractors that they must park their vehicles well away from the gate down to the railway lines. It seems to be working but if anyone does see vehicles on the bridge please phone the police on 101 immediately!.



## Future Community Events

**APRIL FOOL'S BINGO**—A Prize Bingo evening will be held in the Hall on Friday April 1st at 7pm with Myrdd calling the numbers. Open to all.

**AGM**—Henllanfallteg Community Association will holding its AGM on Thursday 19th May at 7.30pm. The Association plays a major part in community life having responsibility for the Hall, this newsletter etc and jointly organising the annual fete. Come along and show your support.

**SUMMER EVENTS**—The Community Association will be organising in late August a Green Energy Trail coupled with another Scarecrow Festival. There won't be an Open Gardens day this year.

## SUNFLOWERS

The Community Association will again be running a free sunflower competition this year and the judges in September will be Josie Thomas and Beth Hermitage. There will be prizes for the tallest flower and the biggest flower. However you must let somebody know if you want to enter. The Fete is a good time to catch any of the Association Trustees.

## YOGA CLASSES

The Ashtanga Yoga sessions are now only on a Wednesday morning from 10.30am. The Thursday evening sessions have been cancelled. But the good news for yoga enthusiasts is that Debby is back. She has started up on a Wednesday evening from 7.30 to 9.

## FREE BOOKS ON WORLD BOOK NIGHT

On Saturday 5th March books will be given away at The Plash from 7pm. Come and receive a free book as part of the celebrations for World Book Night. We have 48 copies of 'The Blind Assassin' by Margaret Atwood to give away. So, why not settle down with your favourite tippie and get lost in a book? For more info call Linda on 01437 563468

## CLUB PAGE

If you have a local club or group or team with news of interest, please pass this to the editors in good time for the next edition.

**BOWLS**—The short mat bowls club continues to thrive on a Monday evening. One new member has gone from beginner to expert in three short months. New members always welcome – bowls provided.

**DARTS**—The team is continuing to enjoy pastures new in deepest Preseli country visiting pubs members had previously only vaguely heard about. The match format in the 2nd division of the Preseli and District Darts League is different from Narberth with each game being decided over three legs instead of one. This has resulted in some quite late evenings but as the beer goes down the skill level does not always go up. The team however had a notable win recently against the Boncath Arms.

**CRAFT**—Curly Locks, Curly Locks good wife of mine,  
All week you do dishes and then feed the kine.

But Wednesday pm, sew, knit this and that,

Feed upon Welsh cakes, tea/coffee and chat. (with apologies to the nursery rhyme). P.S. "Kine" is an old fashion word for cattle, which is more appropriate for our group than the normal "swine" as none of our present number keep pigs.

If you fancy a change on a Wednesday afternoon, then why not come along to the Hall for a couple of hours of "doing your own thing". As well as crafty stuff, it's been proved to be a great place to do all the little household mending jobs that always get to the bottom of the pile. Sometimes the biggest Button Box in the World makes its appearance! You can be guaranteed to find the just the right buttons to suit a new piece of work or to spruce up a jaded item. Wednesdays at 1.30. Hope to see you there or ring Marilyn 01994 240460 for more details.

## MORRIS DANCERS

The "Heb Enw" Border Morris Dancers meet every Tuesday evening in the Millennium Hall. If you're interested in joining why not call in and see what's going on.

## JIVE GROUP

A new group has started up in the millennium hall where dancers can practise the jive steps they have been taught at sessions in the Whitland Dairy & Social Club.

**FRIDAY CLUB** Children from a wide area enjoy coming to the Hall on a Friday evening. Extra adult help would be very much appreciated.

### Community resilience what's it all about?

Anyone who has looked recently at the community web site will have noticed a new page has been added – “Community Resilience”. Unfortunately due to a technical glitch, the page has been blank, as our webmaster has his hands full at the moment. It's just been restored!

The Welsh Assembly and our County Council are encouraging communities to look at how they can survive better in the future, with the expected changes to our lifestyles. The scope is enormous but some issues readily spring to mind

Civil Emergency – how would we cope with a disaster such as happened at Lockerbie?

Weather Emergency – we were lucky last January and also over December and January just gone as threatened snow never materialised but lots of areas were hit.

Civil disruption – major electricity supply failure for example – last we experienced was Jan 1992 but how would we fair in the future?

An invasion of our community - how would we deal with say a proposal to build 20 steel pylons across the middle of the community, as part of a re-enforcement of the National Grid to allow power from off shore renewable generation to reach the industrial midlands?

How could we live better? I am amazed at how many people in the community drive up to Llanddewi in the morning for their daily paper. Paper costs 44p / 60p; transport maybe £1.60 each day? Could it be possible for them say to take turns and bring back 10 papers? There must be a multitude of commodities this might apply to. I recently observed a “Tesco on line delivery”. For any branded good, in standardised packets there has to be scope in “clubbing together” and having the Tesco (or any other) truck delivering ten such orders on the same day and time surely? Is there an enterprising local trader who could fill this gap?

There's more on the Community Website.

**CENSUS** - The census comes again on 27th March this year. The British Census has been held every ten years since 1801 (except 1941) and provides the government and local councils with valuable information to help with planning. Our personal details are locked away for a hundred years and it is only the numbers that are of interest at the moment.

I have been involved with the census since 1961 and have been looking at how things are going to be different this year. For me, once I'd surveyed my patch and made a list of all the properties including empty cottages used by farmers to keep pigs in, the important things were issuing the census forms and then collecting them a week or so later if I could catch people in. This year there will be none of that. 95% of the forms will be delivered by post and then householders will post the forms back or do it all online.

The head of each household will be asked questions about work, health, national identity, citizenship, ethnic background, education, second homes, language, religion, marital status etc of everybody in the house on census night. All the questions must be answered except the one about religion. You can do it all in Welsh if you want to.

When the census was first introduced nobody realised how much interest there would be from family historians. Nowadays people are able to find exactly what their ancestors were doing in say 1881. I was over the moon the night I saw the 1881 census and learnt about my four grandparents and their parents and brothers and sisters. So for the sake of future generations don't forget to fill your form in.

Peter Icke

## MILLENNIUM HALL NEWS

**.SHERRI & STEEL** - Sherri our local country and western singer gave a much appreciated concert in the Millennium Hall on 30th October. As usual Steel provided the backing and the event attracted many of Sherri's fans who come dressed to the nines in all the right gear and put the rest of us to shame. The Plash provided the bar and an enticing array of refreshments.

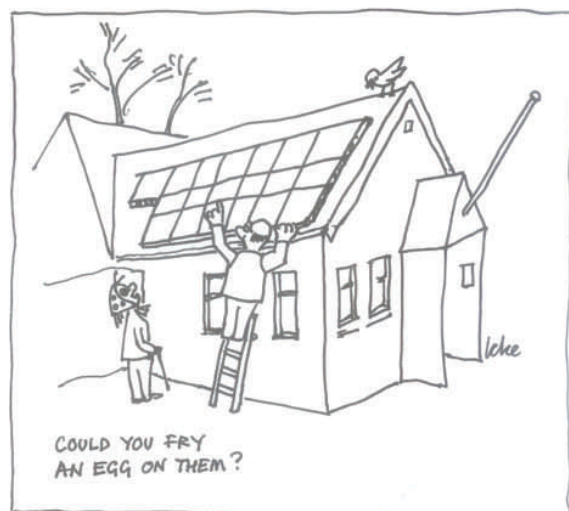
**WEST GALLERY CHOIR** - In the 17th & 18th Centuries musicians used to perform in the west gallery of churches with church and secular music and the odd dance thrown in. If you're interested in the music of that time please get in touch with Paul on 01437 710351.

**FIRE SAFETY IN THE HOME** - If you want the Fire Service to do a free safety check in your home call 0800 169 1234 or go online to [www.wales.gov.uk/fire](http://www.wales.gov.uk/fire). If you don't have smoke alarms at home your local Fire and Rescue Service will fit them for free.

**ROYAL WEDDING** - The idea of having a community street party on the day of the Royal Wedding was floated but only one person turned up to discuss it. So it now looks as if Friday 29th April will be a fairly quiet day in this part of the world.

**VORTIPORE STONE**—has strong connections with the Community. The History Society are endeavouring to make a replica and to site it in the Millennium Hall gardens.

**REMBERANCE DAY**— Again this year a small crowd gathered at The Millennium Hall flagpole and stood in silence at 11.00 with much of the rest of the nation.



4 kW of solar PV panels have recently been installed on the Millennium Hall roof thanks to a generous grant from the County Council. There will be information boards sited near the front door to explain how they work, along with a live readout of how much energy is being produced. This project was targeted at “spreading the word” on alternative energy sources. The Community Association are indebted to Gideon Carpenter for the massive effort he put in to secure the grant funding—well done!

**Would you be prepared to sponsor a future edition of the Helgorn Taf Bugle? Please contact the editors.**

**VOTING** - We don't live in a dictatorship - we live in a democracy and every now and again we get the chance to vote and make a difference. Your next chance comes on 3rd March when the Millennium Hall will be open all day to accept your votes in the Referendum on whether Wales should have its own law-making powers. Make your mind up and vote YES or NO. Then on 5th May you can vote for your Welsh Assembly member. Nominations so far include Angela Burns, Christine Gwyther and Nerys Evans. The winner will become one of the 40 members directly elected. Last time it was a very close run thing in our constituency of Carmarthen West & South Pembrokeshire so every vote is important. There are also 20 regional members which are chosen by a complicated system after you have voted for one of the party lists.

### Community Council News

**St Malltegs churchyard** frequently has come up in correspondence to the council, with relatives complaining about the state of the graveyard. With the help of the Community Association volunteers, the graveyard has been cleared of undergrowth, bar for some areas within private railed areas. Many thanks to Peter Scholfield and Don Loader and all the volunteers for their time and effort. The History Society are planning to map and log all the headstones in the near future.

**The Precept** is the charge levied on each household in the community as part of the rates. This year the council plan no project works to reflect the dire financial situation that local government finds itself in and has reduced the precept by half.

**Planning applications** before the council have dropped in recent months in line with the recession, however Cwmfelin Boeth has bucked the trend with several applications for the councillors to consider. Outcomes maybe viewed in CCC website.

**The Local Development Plan** is CCC future guide to be used in determining the outcome of planning applications. As part of the process, landowners have been invited to put forward "candidate sites" for future development. There are a number of such sites within the community and details can be found on CCC website.

**FETE & SHOW** - Preparations for the big day on Saturday 16th July are going ahead and you will find with this newsletter a copy of the show schedule. The organisers are delighted that there will be an extra cup this year donated by a relative in memory of Willie Reynolds (Will Penybont). Willie was a big supporter of all functions in the village and especially the Fete and Show and having the cup will keep him in our memories. It has been decided to have a major draw this year with printed tickets going on sale weeks before the fete instead of the just on the day.

The proceeds of the 2010 Fete (£3300) were divided between the Play Area and the Millennium Hall and there will be a similar arrangement this year depending on where the need is greatest.

The organisers are hoping to get a few more helpers on the day. The waterslide and the dunking stool are very popular but they need a lot of looking after. If you can give just an hour of your time on the day it would be much appreciated.



**Volunteers Wanted  
of All Ages**

**YOU!**

If you can help make the 2011 village Fete as successful as 2010

**Call John Cooper on 01437 563938 for a chat**

We would also welcome your ideas for new stalls and events.

### Happy New Year from The Plash!

We have started organising some events for 2011 and hope you can all come along and enjoy them. The dates at present are provisional but any details you need closer to the time will be available in The Plash or just phone us on 01437 563472. Once again the Guy Fawkes night was a huge success and definitely the best Fireworks we have had so far. The Christmas Quiz and the Carol Evening were both great fun and we like to extend congratulations to Andy Mackay for winning the Turkey Shoot for the 2nd time since we have been at The Plash..well done!! We would like to thank everyone who came along and supported last years events and helped to raise £235.00 so far towards the Sensory Kit for Llanboidy School. Any fund-raising this year will be for the same cause until we reach our target.

Hope to see you all during 2011!! Cheers, Steve & Christie  
Forthcoming Events:

**Quiz Night:** Tuesdays 8pm, Every Fortnight  
Back after the Christmas break and still remains as popular, with prizes for 1<sup>st</sup>, 2<sup>nd</sup> & 3<sup>rd</sup>, £1 per person and Free food at half time.  
Dates: February 22<sup>nd</sup>; March 8<sup>th</sup> & 22<sup>nd</sup>; April 5<sup>th</sup> & 26<sup>th</sup>.

**Royal Wedding:** April 29th

Details nearer the time.

**Beer Festival:** May 28<sup>th</sup> & 29<sup>th</sup>

The usual shenanigans, Guest Ales, Cider, BBQ, etc. More Details to follow.

**Opening Hours:**

Monday & Tuesday

- 5pm to 11pm

Wednesday to Sunday

- 12noon to 11pm

Food is available during all opening hours.

**THE  
PLASH INN**

Llanfallteg, Whitland, Carmarthenshire, SA34 0UN

For full details on any of the above events please call into The Plash

**Tel: 01437 563 472**

### Llanfallteg Meat Draw

Lamb or Beef or Gammon all from local producers. Home made cake for the second ticket drawn.

Proceeds to Llanfallteg Memorial Playing Field Funds

Held alternate weeks.

**Next draw Saturday 26th Feb in The Plash at 9.00PM**

Tickets on sale during the week before see Mike or Silvia, Swallow Cottage.

### Editors

Dave King  
davemking@clara.co.uk  
Tel 01437 563087  
Peter Icke.  
ickewatersreach@btinternet.com  
01437 563917  
Webmaster James King  
info@jamieking.co.uk



## Llanfallteg Weatherstation news — The recent cold weather

	December 2010	40 year Average	January 2011	40 year Average
Rain mm	56.4	163	177	150
Mean temp	0.2	2.7	3.6	2.6
Highest Temp - date	+10.7 - 28 <sup>th</sup>		+11.5 - 13 <sup>th</sup>	
Lowest temp - date	-12.4 - 25 <sup>th</sup>		-9.3 on 31 <sup>st</sup>	
Days of frost	25	10	17	12
Days below minus 10.	5		0	



It cannot have escaped anyone's notice that December and January have been much colder than we have experienced for a long time. Although we had some snow, this area escaped any really deep or disruptive amounts. In fact December was a very dry month, way below the average for this month at less than one third of that for the past three Decembers. Christmas Day was the coldest with even mid afternoon still being below freezing. A thaw set in shortly after and on the 28<sup>th</sup> we had a positive 10.7 degrees at 13.30, a full 23 degrees warmer than Christmas morning!

January started off mild and wet and 177mm of rain has fallen making it the wettest since I collected weather data as well as over the Wales average. Wettest day was 12<sup>th</sup> with 41 mm of rain. Surprisingly the temperature stayed above 10 degrees all day and night on each day from the 12<sup>th</sup> to 16<sup>th</sup>.

## West Wales 4x4 Group

In the last edition of the Helgorn Taf I told you about the West Wales 4x4 Group and the recreational side of 4x4's.

I also belong to and am the Area Co-ordinator for 4x4 Response Wales which is a registered charity based in Mid-Wales and has a membership of over 180 members. Our basic aim is to provide 4x4 vehicles and drivers to user groups which need to continue their services in adverse weather conditions, usually the Police and local Health Authorities.

We are a totally voluntary group where we give as much time as possible but we do get paid out of pocket expenses. As Volunteers we can attend callouts at all times of the day and night. During the last snow my phone started ringing at 6am and didn't stop until 11pm for the whole 5-day period. 4x4RW covered over 10,000 miles and responded to over 200 calls throughout the South and West Wales area, our main tasks were transporting nurses and doctors to and from various Hospitals.

We have set up a Method of Understanding, with most of the Emergency Planning Officers which is a document that gives guidance to all user groups involved.

All our Drivers have to undertake an assessment to check that they are competent in their duties and most of us will participate in further training and assessments so our skill levels reach a standard where we obtain Qualifications up to N.V.Q level and above. Yes there is a qualification in off road driving, so we can be seen to be a semi professional group. Myrddin Pynn

